

# 快速使用指南 Quick Start Guide

感谢您购买ez Share Wi-Fi影像云盒，请在使用产品前仔细阅读本指南，阅读后请妥善保存以供将来使用产品时参考查阅。

ez Share Wi-Fi影像云盒是为摄影爱好者人群量身打造的一款时尚前卫的图片分享无线数码产品，可配合智能手机/平板电脑使用，是数码相机的贴身伴侣。

\* 本使用指南中的“影像云盒”是“ez Share Wi-Fi影像云盒”的简称。

Thank you for purchasing ez Share Wi-Fi Smart Box. Please read this guide carefully before using the product, and keep it properly for reference in the future.

ez Share Wi-Fi Smart Box is designed for users who are photography enthusiasts/professional photographers to distribute or share images in their digital cameras or massive storage devices via smartphones/tablets.

\* The "Smart Box" hereafter refers to "ez Share Wi-Fi Smart Box" in the guide.

## 【包装物清单】[Package Contents]



## 【入门须知】[Start Guide]

- 产品出厂前已部分充电，但电量仅供出厂检测使用，建议第一次使用时将电池充满后再使用。
- 电源开关键：按下显示电量；长按此键(大于3秒)启动或关闭Wi-Fi影像分享功能。
- 长时间(约30分钟)无外部设备通过Wi-Fi连接时，自动关闭Wi-Fi。

- The battery was partially charged before delivery, the power is used for factory testing ONLY. It is highly recommended to fully recharge the device prior to initial use.
- Power ON/OFF: Click it to indicate the power capacity; Hold on it more than 3 seconds to turn on/off Wi-Fi function.
- Wi-Fi function will automatically be off if no device accesses it over 30 minutes.

## 【部件名称与功用】[Interfaces and functions]



警告！请勿将电源输出与电源输入对接。

Caution: Don't short charge in and charge out, it will damage the device.

指示灯 Indicators	状态 Status	显示 Indication
Wi-Fi指示灯 Wi-Fi Indicator	开启 Wi-Fi On	长按电源开关键(大于3秒)电源开启，指示灯长亮；系统完成启动后，指示灯开始闪烁，表明Wi-Fi开启。 Hold on Power ON/OFF switch over 3 seconds, the Wi-Fi indicator will be lighted, and flashed. That means Wi-Fi is powered on.
	关闭 Wi-Fi Off	电源打开时，长按电源开关键(大于3秒)，电源关闭，指示灯熄灭，表明Wi-Fi关闭。 Hold on Power ON/OFF switch over 3 seconds when the power is on, the indicator will be unlighted. That means Wi-Fi is powered off.
电量指示灯 Power Indicator	电量显示 Power Indication	4个指示灯分别代表电量为25%/50%/75%/100%。 4 scaled indicators represent 25% / 50% / 75% / 100% of the rest power respectively.
	充电中 Charging in	从当前电量指示灯到100%指示灯循环点亮。 The current power indicator to 100% indicator light up circularly.
	充满 Fully Recharged	四个电量指示灯长亮。 Four power indicators light.
	放电中 Charging Out	当前电量指示灯闪烁。 The current power indicator flashes.

## 【产品功能与特点】[Functions and Features]

### 高速无线影像传输 [High-speed Transfer]

- 无线查看、下载、编辑影像云盒内的文件，并实时上传至互联网分享。
- 支持读取SDHC/SDXC存储卡及USB2.0存储设备。
- 多台无线设备可同时接入，同步分享。
- Photos/videos in Smart Box can be wirelessly viewed, downloaded as well as be shared on internet by Wi-Fi devices.
- Compatible with SDHC/SDXC memory card and USB2.0 mass storage.
- Multiple Wi-Fi devices are allowed to simultaneously access it and share files.

### 功能丰富的影像分享Apps [Powerful Apps for Image Share]

- 专业品质高清美图
- 魔术拼图集
- 影像微杂志制作工具
- 个性影集制作工具
- 派之星影像微博
- High-definition photos editing.
- Rotation, crop, collage, and filter offered.
- Personal tags/EXIF and description is presented.
- Friendly photo-sharing experience.

### Wi-Fi路由/中继功能 [Wi-Fi Router / Repeater]

- 连接有线网络（附赠RJ45网络转接头），可自动转换为Wi-Fi路由器网络（信号）覆盖。
- 连接其他Wi-Fi热点，配合APP可实现无线网络中继器功能。

\*请在浏览器或客户端的设置界面中开启中继功能。

●Connecting to a cabled network with enclosed RJ45 converter, Smart Box is automatically performed as a Wi-Fi router.

●Connecting to a Wi-Fi hotspot, Smart Box may perform as a Wi-Fi repeater after it is enabled.

\*Please enable Wi-Fi repeater function on setting page of web browser or App.

### 超长的续航时间 [Power Bank]

- 严选4000mAh高品质聚合物锂电池，连续使用长达25小时；可为智能手机、数码相机（部分型号）、平板电脑及其他数码设备提供应急充电。
- The power bank with 4,000mAh is assembled by world-class Li-ion battery cell, the quality is guaranteed.

## 【技术参数】[Specifications]

产品名称 Product name	Wi-Fi影像云盒 Wi-Fi Smart Box
产品型号 Model	DS500
外型尺寸(mm) Dimension (mm)	124mm*59mm*13.2mm
产品重量 (g) Net Weight (g)	150g
电池容量(mAh) Battery capacity (mAh)	4000mAh
充电输入 Charge In	DC 5V/1000mA
充电输出 Charge Out	DC 5V/1000mA
典型工作时间 Usage Time	25小时 Approx. 25 hours
无线标准 Wireless Protocol	IEEE802.11b/g/n
加密方式 Wi-Fi Encryption	WEP/WPA/WPA2
存储类型 Storage Memory	SDHC(4GB-32GB)/SDXC(64GB/128GB) USB Flash Disk(Support USB2.0HS)
SD速度等级 SD Speed	Class10/UHS-1
支持接入用户数 Access Terminals	5
客户端 Applications	iOS/Android
无线传输距离 Operating Range	室内10-25米，室外50-100米 Indoor 10 to 25 meters, outdoor 50 to 100 meters
支持的图片格式 Images Support	JPG, JPEG, PNG, BMP, RAW
支持的视频格式 Videos Support	MOV, M4V, MP4, AVI

## 【如何使用无线分享？】[How to Share Wirelessly]

### 插入SD卡或USB存储设备[Plug SD card or USB Storage Device into Smart Box]

- 将SD卡插入SDHC/SDXC卡槽，或使用USB口连接USB存储设备(例如U盘等)。
- 无线开启时可供其他Wi-Fi设备（例如手机等）无线读取SD卡或USB存储设备中的文件。
- Plug SD card into Smart Box, or connect USB storage device (USB flash Disk, etc.) via an USB cable.
- When the Wi-Fi of Smart Box is on, Wi-Fi devices can wirelessly access SD card or USB storage devices to perform operation.



### 客户端下载安装[Download and install App]

- 用手机扫描下面的二维码，或在App Store中或Google Play等安卓市场搜索“ez Share易享派”下载和安装客户端软件。
- Scan QR code, or search “ez Share” to download and install the app in App Store or Google Play or other Android Market.



For iOS /Android

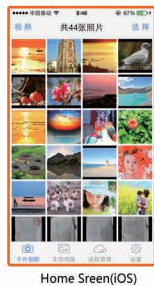
### 连接影像云盒[How to access Smart Box]

- 长按影像云盒电源开关键，开启Wi-Fi分享功能；
- 开启手持终端设备的Wi-Fi网络，搜索并连接影像云盒Wi-Fi热点。
- 默认Wi-Fi密码是“88888888”，主人密码是“admin”。
- Hold on Power ON/OFF switch over 3 seconds to power on Wi-Fi function.
- Enable smart terminal's Wi-Fi, scan and connect the hotspot named “ez ShareXXXX”.
- The default Wi-Fi password is “88888888”, administrator password is “admin”.



### 客户端接入[Access by Apps]

打开客户端，即可访问影像云盒，启动你的无线分享之旅。



### 客户端主要功能：

- 无线浏览、下载影像云盒所连接的存储器中的影像文件
- 简单方便的图文自媒体编辑工具——微杂志。
- 快速分享添加了EXIF、地理位置、心情等信息的照片或图文微杂志。可将照片或由微杂志编辑工具生成的图文微杂志分享到多个社交网站。
- 专业、强大的高清美图、拼图、拼接、艺术拼图功能。
- 面对所有用户的派之星展示平台。
- 设置影像云盒，包括Wi-Fi密码、信道、SSID、主人密码。
- 图片支持JPG和各种RAW格式，EXIF信息显示；视频支持mpg, mp4, mov, avi等。

### Functions for Apps:

- Wirelessly browse and download images and videos in storage device plugged into Smart Box.
- Present tags of EXIF, location, description and other information.
- Professional edits with Hi-Def., normal or templates collages and stitching.
- Set smart Box, including Wi-Fi passwords, channel, SSID, administrator password.
- JPG and RAW formats supported, mpg, mp4, mov, avi for videos supported.



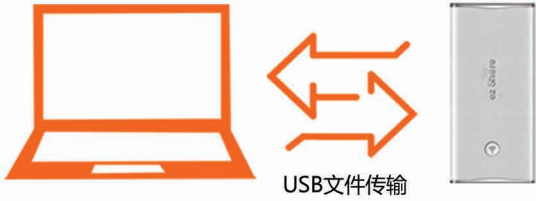
# 快速使用指南 Quick Start Guide

## 【连接电脑】[Connect the Computer]

▲关闭影像云盒电源，插入SDHC/SDXC卡。  
▲使用USB线连接电脑和影像云盒的microUSB接口。  
▲等待几秒后电脑显示出USB盘符，就可以读写SDHC/SDXC卡。  
注：请关闭影像云盒的电源后连接电脑，此时插入影像云盒的SDHC/SDXC卡数据方可被读写。  
影像云盒连接电脑时，可同时向影像云盒充电。

▲Insert SDHC / SDXC card into Smart Box.  
▲Connect computer to micro USB interface of Smart Box with an USB cable.  
▲Once computer detects the plugged the Flash Memory, data in SDHC / SDXC card can be read or written.

Note: Data on SDHC/SDXC plugged into Smart box can be read or written unless Smart Box is connected to a computer after it is powered off.  
Smart Box is being in the process of recharging when it is connected to a computer.



USB文件传输

## 【Wi-Fi路由】[Wi-Fi Router]

①使用RJ45网络转接头连接有线网络与影像云盒。  
②打开影像云盒功能键开关，形成Wi-Fi热点。  
②其他Wi-Fi设备（如手机、平板等）可通过连接影像云盒热点接入互联网。

①Connect a cable network to Smart Box with RJ45 converter.  
②Power on Wi-Fi function of Smart Box to create a WLAN hotspot.  
③Wi-Fi devices can access the Internet by connecting to the hotspot of the WLAN.

## 【Wi-Fi中继】[Wi-Fi Repeater]

▲影像云盒可接入互联网上的Wi-Fi热点，并由此为周边设备提供互联网热点接入服务。  
▲手机可通过影像云盒的自建Wi-Fi热点同时访问影像云盒和互联网。

▲Smart Box can be connected to others hotspot and provides Wi-Fi access services for nearby Wi-Fi devices for internet surfing.  
▲Wi-Fi device can access Smart Box and Internet simultaneously.

## 【充电功能】[Recharging Description]



▲为本产品充电  
▲使用输出为DC 5V/1000mA的充电器为影像云盒充电。

▲Charge for Smart Box  
▲Recharge the Smart Box at DC5V/1000mA.

▲为您的手机等设备充电  
▲使用USB数据线连接影像云盒USB口和手机，可为手机充电。  
▲Recharge smart-phone or other device  
▲Connect Smart Box to smart-phone with USB cable to recharge devices.

(对手机或数码产品进行充电前，请仔细核对被充电产品的输入电压与电流，如果不适合用本产品充电，强行充电，可能会引起被充电产品的电池电芯膨胀现象，降低被充电产品的电池使用寿命，甚至可导致被充电手机或其他数码产品的损坏。)

( Please check the needed input DC is right before charging for your mobile phone or other device.)

## 【常见问题】[Frequently Asked Questions]

◆问：影像云盒支持接入哪种SD卡？  
答：支持SDHC和SDXC标准，存储容量最高支持128GB；支持Class10及UHS-1读写标准。  
◆问：影像云盒上两个USB接口的作用怎么区分？  
答：影像云盒上具有两个USB接口，其中，标准USB接口主要用于：①对其他移动设备充电；②读取外接的U盘文件；microUSB接口主要用于：①对本设备充电；②电脑通过本接口读写插入本设备的SD卡。  
◆问：影像云盒的Wi-Fi中继是什么意思？有什么功能？  
答：通过在客户端上启动影像云盒的中继功能，影像云盒可接入互联网上的Wi-Fi热点，并由此为手机等周边设备提供互联网热点接入服务。启动中继功能后，手机客户端可以一边浏览影像云盒中的文件，一边连接互联网上网或者分享图片或微杂志。此时若采用浏览器访问影像云盒中的文件，请直接浏览器的地址栏输入http://192.168.4.1/。  
◆问：影像云盒默认热点名称和密码是什么？如何修改？忘记后如何重置？  
答：影像云盒出厂设置的热点名称（SSID）为“ez Share xxxx”；Wi-Fi密码是“88888888”；主人密码是“admin”，用户可以在设置界面修改热点名称和密码，如遗忘密码您可通过长按Reset（大于5秒）以恢复初始密码。（注：短按Reset系统重新启动）  
◆问：影像云盒支持什么文件格式？  
答：支持以下的文件格式，包括但不限于：  
- 图像：JPG，JPEG，PNG，BMP，以及各种RAW...  
- 视频：MP4，MOV，M4V，AVI。

◆Question: What kinds of SD card can Smart Box support?  
Answer: SDHC and SDXC supported and its capacity ranges from 4GB up to 128GB at Class10 and UHS-1 for R/W speed.

◆Question: How to distinguish the two USB interfaces on Smart Box?  
Answer: The Smart Box has two USB interfaces, one is standard USB, the other is micro USB, of which, the standard USB interface is mainly used for: ①Recharge other devices; ②Read external USB flash Disk;  
The micro USB interface is mainly used for: ①Recharge the Smart Box; ②A computer can access the SD card plugged into Smart Box via this interface.

◆Question: What does Wi-Fi repeater for Smart Box refer to? What functions does it have?  
Answer: Smart Box may perform as a Wi-Fi repeater after repeating function is enabled, and it may be connected to others hotspot and provides Wi-Fi access services for nearby Wi-Fi devices for internet surfing. Users can access Smart box to operate ez Share APPs and surf internet simultaneously. URL of "http://192.168.4.1" is needed to be keyed in the address bar once internet browser is used to access Smart box.

◆Question: What are Smart Box's default SSID and Wi-Fi password? How to rename and to reset them?

Answer: The default SSID is "ez ShareXXXX"; Default Wi-Fi password is "88888888"; and administrator password is "admin". You can change them on settings page if needed; If you forget the password, please reset to default setting by pressing reset button for 5 seconds;  
(Note: Short press Reset button to restart the system)

◆Question: What file formats does Smart Box support?

Answer: Images and videos are supported by Smart Box, they include:

- Images: JPG, JPEG, PNG, BMP and RAW  
- Videos: MP4, MOV, M4V, AVI.

## 【射频信号的泄露与安全注意事项】[Leakage of RF signal and Safety Precautions]

您的ez Share产品一旦开启Wi-Fi功能，就会间歇性地接收和发送无线电信号。请您在贴有通知的场所按规定关闭网络。这些场所包括医院等医疗场所、易燃易爆区域或飞机上等可能正在使用对外部射频信号敏感设备的区域。

### 警告

ez Share 产品中包含精密电子线路，应小心处理，尤其须注意如下要点：

▲无论何时，请勿让产品接触液体或处于潮湿环境，应在干净、无尘的环境中使用；  
▲请勿将产品放在温度过高或过低的环境中；  
▲切勿尝试拆卸任何组件；  
▲由于产品包含易损部件，请注意保管，勿让产品受到撞击或强力挤压。  
▲本产品在使用、充电或存放时，如出现异常气味，温度过高（正常使用温度稍高但不应烫手），鼓胀，颜色或形状改变等异常现象应当立即停止使用并与经销商联系。  
▲非专业人士请勿更换电芯，否则可能导致且不限于烫伤、灼伤、燃烧、爆炸等事故。

### 其他注意事项：

▲信号强度与网络环境相关，如果离开了WLAN的覆盖范围，Wi-Fi通讯将被自动切断；  
▲根据使用环境（住宅结构，家具配置，摆放位置，邻近的各种无线设备使用等），有可能出现因传输速度下降不能使用本产品的情况；  
▲首次使用时请先将本产品充满电，本产品在长期不使用时，请确保三个月内至少为其充电一次。长时间使用时，本产品会发热但不烫手，这属正常现象。

Once the Wi-Fi function is started, the ez Share product will receive and send radio signal intermittently. Please shut down your ez Share product Wi-Fi network as regulated where there is relevant notice attached. These places include hospitals and other medical sites, inflammable and explosive sites, or planes and other sites where equipment sensitive to external RF signals are used.

### Warning

ez Share product contains precision electronic circuit and it should be handled with care. Particular attentions should be paid to the following key points:

▲ez Share product should not contact the liquid or be placed in a damp environment at any time; It should be used in a clean, dust-free environment;  
▲Please do not place the ez Share product in any place where the temperature is too high or too low;  
▲Please do not try to dismantle any of its components;  
▲Due to its fragility, keep ez Share product properly and keep it from impacts or strong extrusions.  
▲Do not use this product if electrolytic liquid leakage, strange odor, overheating, color change or any other peculiar occurrence is detected.  
▲Replacement of battery cell prohibited, which maybe cause scald, fire, blast accidents, etc.

### Other Precautions:

▲The signal quality of ez Share's Wi-Fi lies on the network environment; if it is placed beyond the coverage area of WLAN, Wi-Fi communication will be automatically disconnected;  
▲This product may be out of run due to the slowdown of transmission speed according to its service environment (residential buildings, furniture configuration, locating place and the use of all kinds of wireless devices nearby, etc.);  
▲If this product will not be used for an extended period of time, please take the following steps once three months to ensure proper function:  
1. Charge the product and discharge the product.  
2. Store the product in a cool, dry place to avoid short-circuiting and damaging the product.

（产品中有毒有害物质或元素名称及含量）

部件名称	有毒有害物质或元素					
	铅 (Pb)	汞 (Hg)	镉 (Cd)	六价铬 (Cr(VI))	多溴联苯 (PBB)	多溴二苯醚 (PBDE)
电子印刷电路板	×	○	○	○	○	○
塑料外壳	○	○	○	○	○	○

○：表示该有毒有害物质在该部件所有均质材料中的含量均在 SJ/T11363-2006 标准规定的限量要求以下。  
×：表示该有毒有害物质或元素至少在该部件的某一均质材料中的含量超出 SJ/T 11363-2006 标准规定的限量要求。

10

## 【保修条款】[Warranty Term]

本产品自购买之日起一年内实施全国联保。  
本质保不适用于因意外、人为破坏、滥用或不当使用所造成的损坏。  
存储的个人数据不在保修范围内，请注意备份。  
Warranty term is conformed to local's regulations.  
Please contact our official resellers/or agents for after-sale service.

## 【版权申明】[Copyright]

©2011-2014 中科龙泽信息科技有限公司

ez Share® 是 中科龙泽的注册商标

其他品牌标识和产品名称为各自拥有方的注册商标。

中科龙泽信息科技有限公司有权随时对上述内容中可能出现的打印错误、与最新资料不符之处、程序和设备的改进而做出改动或改进，这些改动恕不另行通知，但将会编入新版使用指南中。

Copyright ©2011-2014 LZel Information Technology Co, Ltd.

ez Share® All Rights Reserved.

Other brands and product names are trademarks or registered trademarks of their respective holders.

ez Share is a trademark of LZel in China and/or other countries.

## 【联系我们】[Contact Us]

产品网址(website)：www.ezshare.com.cn

邮件地址(Email)：sales@lzeal.com

联系电话(Tel)：+86+10-82345267

售后专线(Service)：+86-10-84924650



Model: DS500

LZP07013:1.0